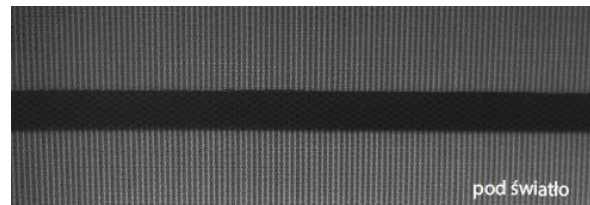
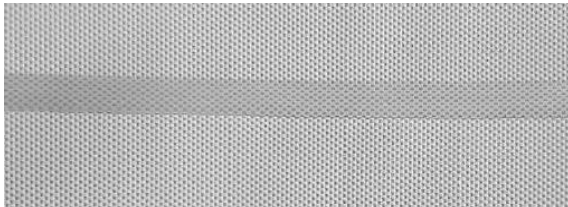


PRODUCTION PROPERTIES OF SCREEN ROLLERS

1. SEAL

If the width and height of the screen blind with the selected material exceed the width of the beam, the material must be welded. The fabrics are joined at an appropriate temperature, which results in the weld being clearly marked. Double folding of the material contributes to unevenness. This effect is more noticeable for larger fabrics light penetration at the point of fabric connection opening rate; 5% or 10%. The weld is normally performed horizontally, in the upper part of the roller blind.



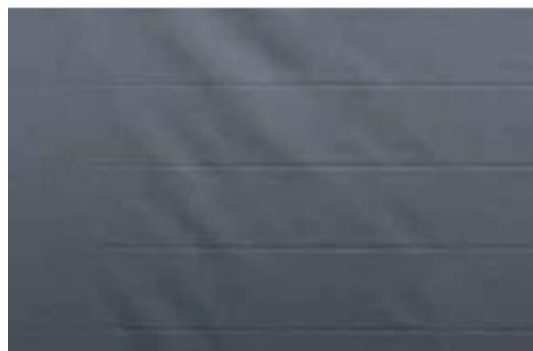
2. ZIP ZIPPER

Installing a ZIP lock requires welding various material structures (sheathing and zipper), which may result in material waviness. This phenomenon is visible within the guide (at the height of the guide). This effect may intensify at low temperatures, as well as in cases where the screen roller blind system remains rolled up for a long time.



3. CONNECTING THE MATERIAL WITH THE ROLLING TUBE

Horizontal creases may appear on the cover where the fabric connects to the winding tube. It may happen that the deflection of the winding tube will cause the materials of its central part to wave. This is only a visual effect and does not affect the functioning of the roller blind.



PRODUCTION PROPERTIES OF SCREEN ROLLERS

4. WRINKLE OF THE MATERIAL IN THE SHAPE OF THE LETTER "V"

During the rolling and unwinding process, the covering is characterized by work (especially in the areas of joints and stitching), which results in the appearance of "V"-shaped wrinkles. To reduce the visibility of the above wrinkle, stop the lower strip of the unrolled fabric 2-3 mm before the end of the guide.



5. THERMAL EXPANSION

Materials containing PVC may react to temperature differences. This may result in a different degree of tension in the plating.

6. FABRIC COLORS

Fabrics from different production batches may differ in shade and, in the case of fabrics in metallic colors, in the degree of metalization of the material.

7. SCREEN ROLLER SHUTTER MOUNTED IN A PERGOLA OR ON A FACADE

If the screen roller blind is mounted on a pergola or on a façade (on a wall), the product loses its wind resistance of 145 km/h. You should always roll up the screen roller blind when there is wind or equip the product with weather automation (wind sensor).

All the above-mentioned production properties do not constitute the reason/subject of a complaint.